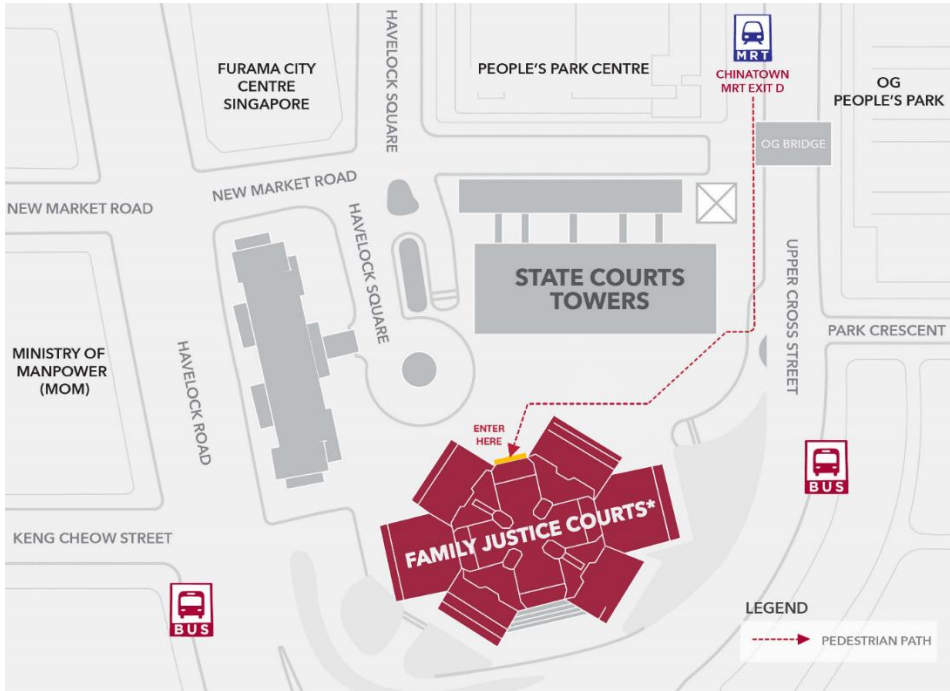


Location map



## Directory of the Family Justice Courts Building

**B1**

- Bar Room
- Rooms B1-02 to B1-05

**L1**

- Family Justice Courts Service Hub
- Maintenance Mediation Chambers
- Family Protection Centre
- Courts 1A to 1D
- Chambers 1-05 to 1-12 & 1-76 to 1-77
- Rooms 1-01 to 1-16 & 1-57 to 1-79
- Quiet Rooms

**L2**

- High Court (Family Division),
- Family Court (Divorce, Guardianship and Family Proceedings)
- Mental Capacity, Adoption and Probate
- Chambers 2-02 to 2-14 & 2-57 to 2-66
- Rooms 2-03 to 2-13 & 2-53 to 2-70
- Quiet Room

**L3**

- Family Dispute Resolution
- Counselling and Psychological Services
- Chambers 3-01 to 3-21
- Rooms 3-03 to 3-19 & 3-51 to 3-71

**L5**

- Courts 5A to 5F & 5G to 5P
- Chambers 5-01 to 5-06 & 5-51 to 5-54
- Rooms 5-02, 5-05
- Quiet Room

**L7**

- Courts 7A to 7D & 7E to 7G
- Chambers 7-02 to 7-08 & 7-51 to 7-65
- Rooms 7-01 to 7-07 & 7-54

## Family Justice Courts

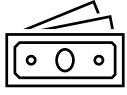
The Family Justice Courts are part of the court system in Singapore that upholds the law and ensures justice is accessible to all. They have judicial power to hear family-related cases that involve legal issues within the family, such as divorce, probate, maintenance, and family violence, among other cases. The Family Justice Courts also deal with the care and treatment of young persons and operates based on the principles of Therapeutic Justice. This is a multi-disciplinary approach that applies insights from psychology and social science research for more holistic outcomes.

The Family Justice Courts are made up of the following courts:

- Family Courts
- Youth Courts
- Family Division of the High Court

## Services provided at the Family Justice Courts Service Hub

### General Enquiries



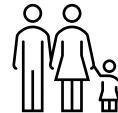
MAINTENANCE



DIVORCE



PROBATE



ADOPTION



MENTAL  
CAPACITY

### Transactions



FILING OF  
APPLICATIONS



APPEALS-  
RELATED  
PAYMENTS  
(FOR NON  
ELIT  
SUBSCRIBER



APPLICATION  
FOR COURT  
RECORDS



SUBMISSION  
OF COURT  
DOCUMENTS



COLLECTION  
OF COURT  
DOCUMENTS



AFFIRMATION  
OF LEGAL  
DOCUMENTS

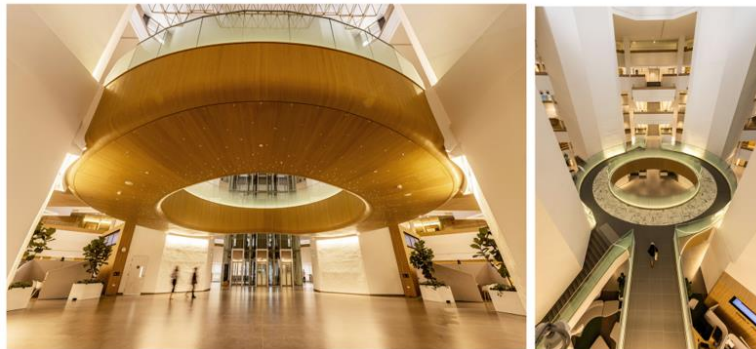
## Photos of services provided at the Family Justice Courts Building

### (a) Information Counter and Atrium



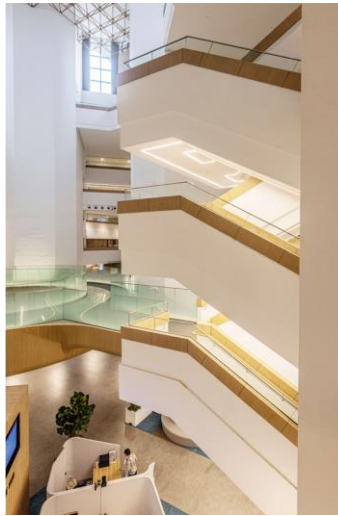
(Left) Level 1 Information Counter; the intentional use of golden colour and wood throughout the main core of the building is meant to evoke a sense of warmth throughout the building. (Photos: Singapore Courts)

### (b) Level 2 Podium



The distinctive 'doughnut' design element is preserved from its predecessor. In a nod to the building's heritage, approximately 71 square metres of marble tiles from the original Octagon building's podium floor have been carefully conserved and repurposed. These historical tiles, which once adorned the area above the former Criminal Mentions Court 26 in the State Courts, now form an integral part of the new podium, seamlessly blending the past with the present in this modernised judicial complex. (Photos: Singapore Courts)

### (c) Floating Staircases



The floating staircases are also a key design element of the building's interior as it looks suspended in mid-air. This was one of the features that URA specifically requested to be conserved. The floating stairs are an engineering feat as it took much thought and planning to conceal the support systems for the stairs, to create a neat structure that is also a piece of art. (Photo: Singapore Courts)

### (d) Service Hub



Family Justice Courts Service Hub located at level 1. The Family Justice Courts building consolidates all Family Justice Courts services into a single, purpose-built facility, enhancing operational efficiency and improving access to family justice services. (Photos: Singapore Courts)

### **(e) Youth Court**



The Youth Court features modular courtrooms designed for maximum flexibility and efficiency. The courtroom features movable furniture, allowing for adaptable layouts to suit various hearing needs and requirements. Technological infrastructure is standardised across all courtrooms, ensuring consistency and ease of use. Each courtroom is equipped with an audio and video recording system, large screen video display, and a visualiser. Zoom-integrated multi-view cameras facilitate video conferences and hearings, enhancing remote participation capabilities. For the convenience of court users, power points for charging laptops are readily available. The courtroom tables are fitted with built-in speakers, improving audio clarity during proceedings. (Photos: Singapore Courts)

### **(f) Quiet Room**



The Quiet Rooms located on level 1 and level 5 are self-help spaces which users can utilise to calm themselves down without needing staff intervention. The design of these rooms was made in consultation with professionals. Various sensory items, such as ear defenders, fidget cubes, and white noise machines, are also available in the Quiet Rooms. These may help to regulate sensory input and calm down when feeling overwhelmed. (Photo: Singapore Courts)



### **(g) Family Dispute Resolution Centre**



The Family Dispute Resolution Centre at level 3 is where families resolve their disputes as far as possible through mediation. Mediation sessions are conducted by specially appointed judges, staff family mediators, or volunteer legal professionals. Mediation sessions are conducted in the chambers (right). (Photos: Singapore Courts)

### **(h) Child-friendly Interview Room**



The child-friendly Interview Room located at level 3 is a carefully designed space that prioritises the comfort and safety of children involved in family law proceedings. It features age-specific areas for younger children and teenagers, with safety measures such as padded walls and soft-edged furniture. The room is equipped with toys, games, and creative materials to help children express themselves comfortably. A one-way mirror allows for unobtrusive observation by in-house custody evaluators. This thoughtfully designed environment serves both as an interview space for Judicial Officers and Court Family Specialists, in a supportive setting where children can communicate their feelings and experiences effectively. (Photo: Singapore Courts)

### (i) Heritage Court



The old Court 1 at level 7, State Courts building was designated as a heritage court to be conserved. The original timber slats were salvaged from the other courtrooms and were treated and reused in Court 7B (aka Heritage Courtroom). The furniture (e.g. person in custody dock, benches) from the old Court 1 were refurbished and retained. Approximately 500 square metres of conserved timber slats were used. The remaining timber slats that were salvaged, treated, and were reused as the Judge Bench cladding at the Level 7 High Court (Family Division) courtrooms. (Photos: Singapore Courts)